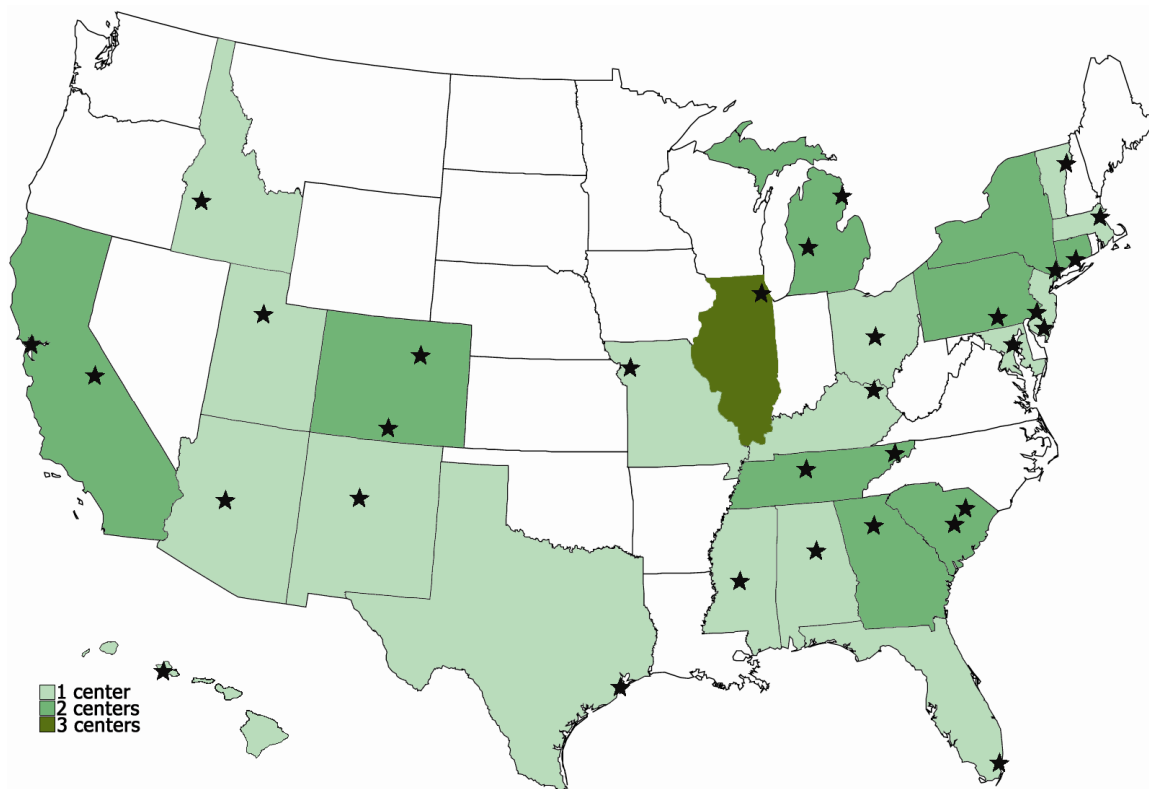




# Sentinel Centers Network 2004 Supplemental Report May, 2007



Funding for the Sentinel Centers Network provided by:



U. S. Department of Health and Human Services  
Health Resources and Services Administration  
Bureau of Primary Health Care

Prepared by:  
The logo for the Center for Collaborative Research in Health Outcomes & Policy (CRHOP), featuring the letters "CRHOP" in a bold, blue, sans-serif font with a stylized graphic element to the left.

Center for Collaborative Research  
in Health Outcomes & Policy at  
Michigan Public Health Institute



**Sentinel Centers Network (SCN)  
2004 Supplemental Report  
May, 2007**

**Funding for the Sentinel Centers Network Provided by  
U. S. Department of Health and Human Services  
Health Resources and Services Administration  
Bureau of Primary Health Care**

**Project Officers**

Amisha Pandya  
Vanessa Watters

**Report Produced by  
Sentinel Centers Network Project Staff at the  
Center for Collaborative Research in Health Outcomes & Policy  
at the Michigan Public Health Institute**

**Program Director**

Lynn Breer  
Earl Sauers

**Project Staff**

Christopher Wojcik  
Cheribeth Tan-Schriner  
Ray Kalush  
Kanchan Sehgal  
Josh Adams  
Joan Moore

**Consultation Provided by**

Dr. Beth Virnig, Ph.D., University of Minnesota Department of Health Services  
Research/Policy

## Table of Contents

|   |           |
|---|-----------|
| <b>Introduction.....</b>  | <b>5</b>  |
| <b>Health Center Profile &amp; Demographics.....</b>  | <b>6</b>  |
| Figure A1: Number of Health Centers by Number of Patients.....  | 6         |
| Figure A2: Number of Health Centers by Number of Encounters .....   | 6         |
| <i>Patients Served by Age.....</i>  | <i>7</i>  |
| Figure A3: Number of Health Centers by Age Group Distribution.....  | 7         |
| <i>Patients Served by Gender.....</i>   | <i>7</i>  |
| Figure A4: Number of Health Centers by Gender Distribution.....   | 7         |
| <i>Patients Served by Race/Ethnicity .....</i>  | <i>8</i>  |
| Figure A5: Number of Health Centers by Race/Ethnicity Distribution.....   | 8         |
| <b>Chronic Conditions.....</b>  | <b>9</b>  |
| Figure B1: Number of Health Centers by Chronic Condition Rates .....  | 9         |
| Figure B2: Twenty Most Common Chronic Conditions Among SCN Patients .....   | 10        |
| Figure B3: Distribution of Chronic Health Conditions Among SCN Patients .....   | 10        |
| Figure B4: Distribution of Patients With & Without Chronic Health Conditions by<br>Selected Demographic Characteristics ..... | 11        |
| Figure B5: Average Number of Encounters by the Number of Chronic Conditions   | 12        |
| Figure B6: Number of Health Centers by Average Number of Encounters Among<br>Patients With & Without Chronic Conditions ..... | 12        |
| <b>Diabetes &amp; Comorbid Conditions .....</b>   | <b>13</b> |
| Figure C1: Percentage of Diabetic Patients with Additional Chronic Conditions...  | 13        |
| <b>Influenza &amp; Pneumonia Vaccinations.....</b>  | <b>14</b> |
| <i>Influenza Vaccinations.....</i>  | <i>14</i> |
| Figure D1: Number of Health Centers by Influenza Rates.....   | 14        |
| Figure D2: Influenza Vaccination Rates by Demographic Characteristics .....   | 15        |
| Figure D3: Influenza Vaccination Rates Among Patients with Selected Health<br>Conditions .....                                | 15        |
| <i>Pneumonia Vaccinations .....</i>   | <i>15</i> |
| Figure D4: Number of Health Centers by Pneumonia Vaccination Rates.....   | 16        |
| Figure D5: Pneumonia Vaccination Rates by Demographic Characteristics .....   | 16        |
| Figure D6: Pneumonia Vaccination Rates by Selected Health Conditions .....  | 17        |
| <b>Lead Screening &amp; Diagnosis Among Children .....</b>  | <b>18</b> |
| <i>Children 9 to 72 Months .....</i>  | <i>18</i> |
| Figure E1: Number of Health Centers by Lead Screening Rates .....   | 18        |

|   |           |
|---|-----------|
| Figure E2: Children 9 to 72 Months Who Were Screened & Diagnosed for Lead Exposure .....  | 19        |
| <i>Children 9 to 36 Months &amp; 37 to 72 Months</i> .....                                | 19        |
| Figure E3: Children 9 to 36 Months Who Were Screened & Diagnosed for Lead Exposure .....  | 20        |
| Figure E4: Children 37 to 72 Months Who Were Screened & Diagnosed for Lead Exposure ..... | 20        |
| <b>Changing Payment Sources Among SCN Patients</b> .....                                  | <b>21</b> |
| Figure F1: Comparison of Payment Source at Patient’s First & Last Visits .....            | 21        |
| Figure F2: Flow of Payment Source Among SCN patients.....                                 | 22        |
| <b>Conclusion</b> .....   | <b>22</b> |
| <b>Appendix I – Chronic Conditions Among SCN Patients</b> .....                           | <b>23</b> |
| Figure I1: Complete Listing of Chronic Conditions Among SCN Patients.....                 | 23        |

## Introduction

This report was developed as a supplement to the 2004 SCN Aggregate Report. It presents the results from a number of exploratory analyses that were conducted after the aggregate report was drafted and released. Information in this report includes: a health center profile and demographic overview, the level and extent of chronic health conditions among SCN patients, diabetes and co-morbid conditions, influenza and pneumonia vaccinations, lead screenings and diagnosis of elevated blood lead levels or toxic exposures to lead among children, and changes in payment source from patient's first and last visits within the calendar year. The SCN staff intends to incorporate many of the analyses presented in this report into future versions of the SCN Aggregate Report.

The SCN is a national sub-group of Bureau of Primary Health Care (BPHC) supported health centers (39 participant organizations representing 63 independent health centers and one health care delivery site). Fifty-nine of the health centers and the additional delivery site contributed data to the 2004 aggregate and supplemental reports.

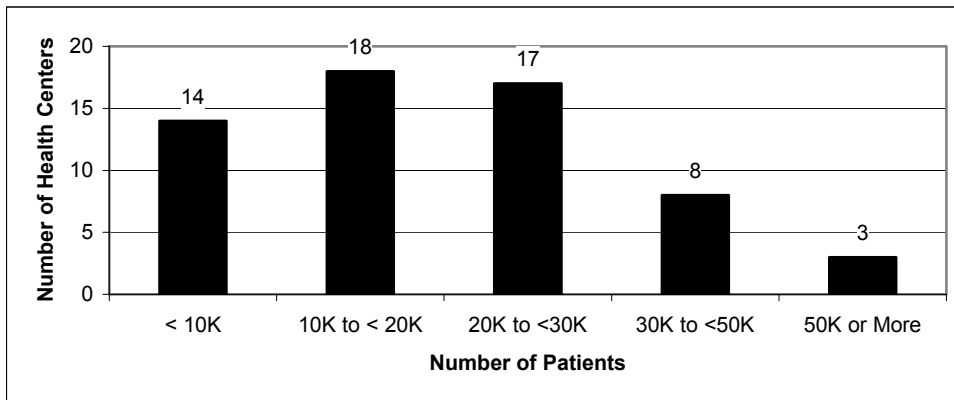
The SCN goals are to better understand the care that health centers provide and to assess the level and quality of care received by their patients. The SCN is funded by the BPHC at the Health Resources and Services Administration (HRSA), and is conducted in partnership with the Michigan Public Health Institute (MPHI).

To obtain a copy of the SCN 2004 Aggregate Report, visit [www.mphi.org/files/SCN\\_December2006.pdf](http://www.mphi.org/files/SCN_December2006.pdf). Comments and suggestions related to the aggregate or supplemental reports can be sent to [SCN@mphi.org](mailto:SCN@mphi.org). Please include SCN Report in the subject line.

## Health Center Profile & Demographics

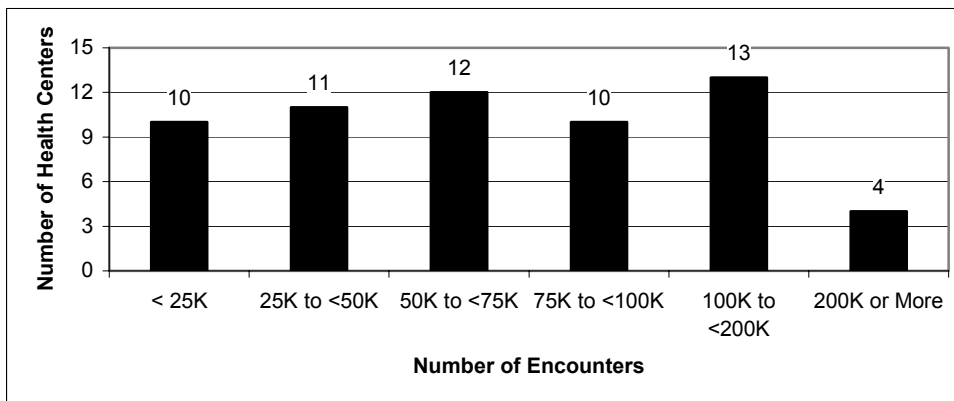
This section provides information about the volume of patients and selected characteristics of patients most commonly served at SCN health centers. Data were collected on a total of 1,428,651 patients for the 2004 calendar year, translating to an average of 23,043 patients per health center. The majority of health centers (50 out of 60) served fewer than 30,000 patients, and 14 health centers served fewer than 10,000 patients (Figure A1). Only 3 health centers served more than 50,000 patients in 2004.

**Figure A1: Number of Health Centers by Number of Patients**



The overall SCN patient population accounted for a total of 5,562,028 encounters in 2004, averaging 80,609 encounters per health center. Slightly more than half of the health centers (33 of 60) had fewer than 75,000 patient encounters in 2004 (Figure A2). Four health centers had more than 200,000 patient encounters that same year.

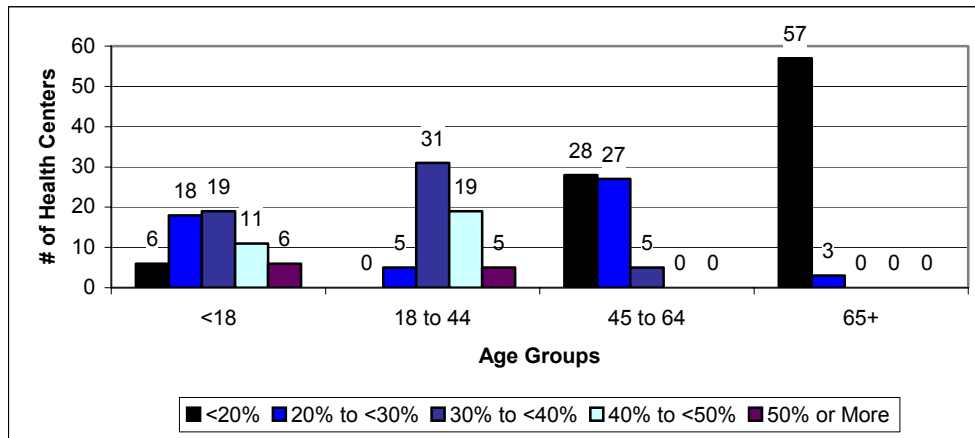
**Figure A2: Number of Health Centers by Number of Encounters**



**Patients Served by Age**

The majority of SCN health centers served a patient population that consisted mainly of young adults and, to a lesser extent, children. Figure A3 shows that 55 out of 60 health centers had more than 30% of its patient population between the ages of 18 and 44, with 24 health centers consisting of patient populations within this same age range above 40%. Patients 65 years of age or older accounted for less than 10% of the patient population for 44 health centers.

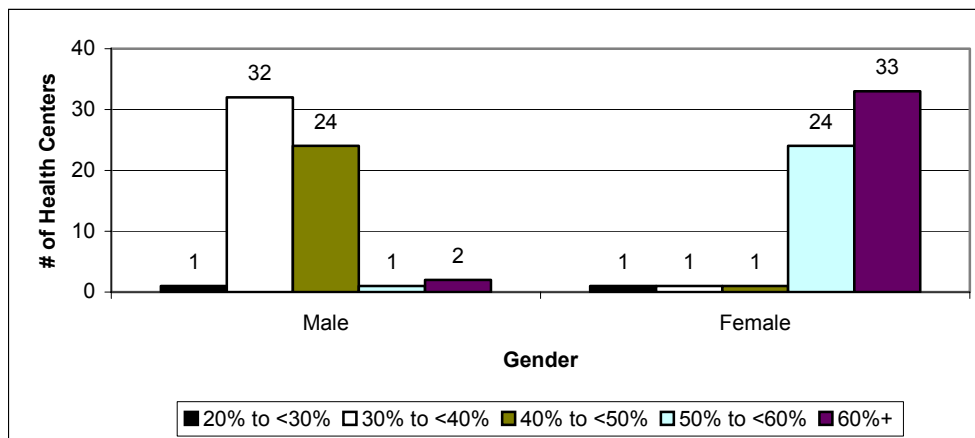
**Figure A3: Number of Health Centers by Age Group Distribution**



**Patients Served by Gender**

In the overall 2004 SCN patient population, females accounted for 60.5% and males accounted for 39.5% of the patient population. Altogether, in 57 of 60 SCN health centers, females accounted for at least 50% of their center’s patient populations (Figure A4). Males accounted for between 30% and 50% of patient populations for 56 of 60 health centers.

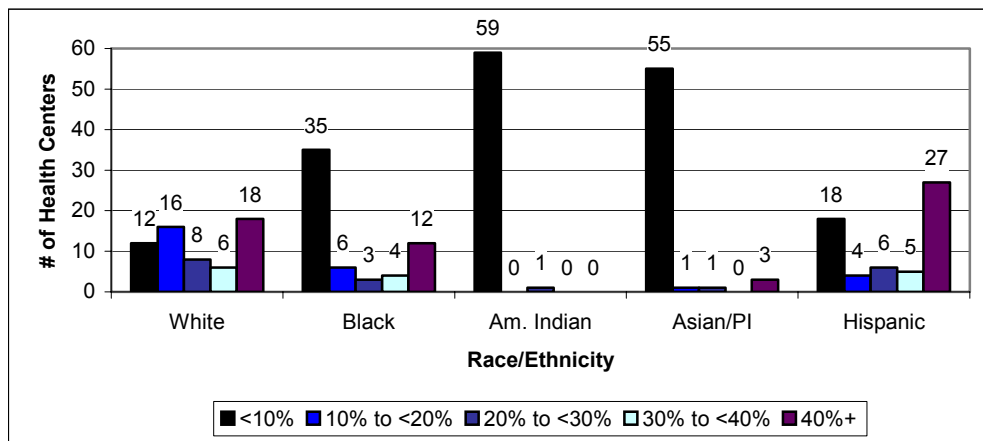
**Figure A4: Number of Health Centers by Gender Distribution**



**Patients Served by Race/Ethnicity**

Hispanic patients accounted for the largest race/ethnicity category among SCN patients at 37.9%, followed by White patients (23.9%) and African-American patients (23.3%). Furthermore, Hispanic patients account for more than 40% of the patient population at 27 of 60 health centers (Figure A5). Despite accounting for only 4.5% of the overall SCN patient population, Asian/Pacific Islanders made up at least 40% of patient populations at 3 different health centers. White and African-American patients accounted for more than 40% of patient populations at 18 and 12 health centers, respectively. There was one center that had between 20% and 30% of its patient population that consisted of American Indians. All other health centers were less than 10% American Indians.

**Figure A5: Number of Health Centers by Race/Ethnicity Distribution**

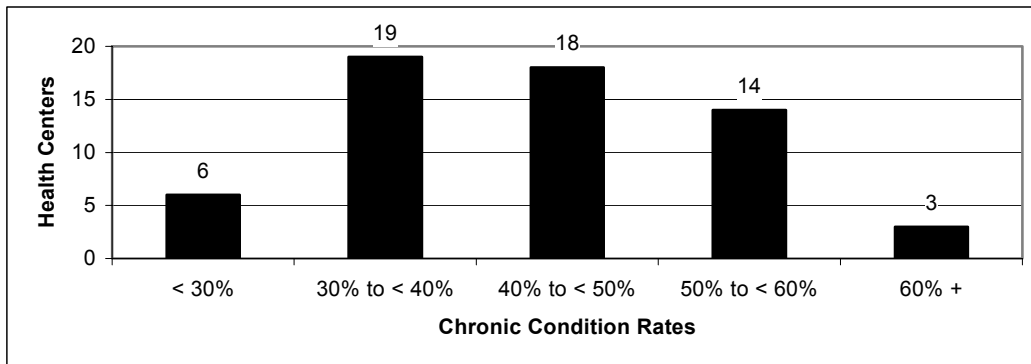


## Chronic Conditions

Chronic condition is a broad term that refers to a health condition that lasts for some extended period of time. Typically, a chronic condition is one that lasts for a year or more and may pose a threat to a person's health status if untreated or requires ongoing medical care. Chronic conditions were identified through use of the Clinical Classification Software (CCS), 2006 which was developed by the Agency for Healthcare, Research, and Quality (AHRQ). The CCS groups ICD-9 codes into similar and meaningful categories. There are several different levels of categorization, depending on the specificity of the diagnosis. For this report, CCS Multi Level 2 was utilized which includes 130 chronic health condition categories.

Overall, among the 1,428,651 patients identified within the SCN in 2004, 574,599 (or 40.2%) had at least one chronic health condition. Within each individual health center, the chronic condition rate among patients ranged from a low of 3.1% to a high of 64.5%. Figure B1 shows the number of health centers with selected chronic condition rate intervals.

**Figure B1: Number of Health Centers by Chronic Condition Rates**



The most common chronic health condition found among SCN patients was Hypertension (12.11% of all patients), followed by Disorders of lipid metabolism (6.88%) and Diabetes mellitus without complication (5.60%). Of note, 2.5% of patients had a diagnosis of diabetes with complications. Approximately 1.4% of patients were diagnosed with both diabetes with and without complications at some point during 2004. Figure B2 shows the 20 most common chronic conditions found among SCN patients in 2004. A complete listing of all chronic conditions can be found in Appendix I.

**Figure B2: Twenty Most Common Chronic Conditions Among SCN Patients**

| Chronic Condition  | #       | %     | Chronic Condition  | #      | %   |
|--|---------|-------|--|--------|-----|
| Hypertension   | 173,034 | 12.11 | Diabetes mellitus with complications                     | 35,034 | 2.5 |
| Disorders of lipid metabolism                                | 98,252  | 6.88  | Alcohol and substance-related mental disorders           | 34,961 | 2.4 |
| Diabetes mellitus without complications                      | 80,049  | 5.60  | Upper gastrointestinal disorders                         | 34,001 | 2.4 |
| Other mental conditions                                      | 60,738  | 4.25  | Diseases of the heart                                    | 32,774 | 2.3 |
| Asthma   | 59,892  | 4.19  | Thyroid disorders  | 30,717 | 2.2 |
| Other upper respiratory disease                              | 59,607  | 4.17  | Affective disorders                                      | 26,862 | 1.9 |
| Other nutritional; endocrine; and metabolic disorders        | 59,429  | 4.16  | Chronic obstructive pulmonary disease and bronchiectasis | 17,342 | 1.2 |
| Diseases of female genital organs                            | 49,971  | 3.50  | Symptoms; signs; and ill-defined conditions              | 15,123 | 1.1 |
| Non-traumatic joint disorders                                | 42,627  | 2.98  | Viral infection  | 13,333 | 0.9 |
| Anxiety; somatoform; dissociative; and personality disorders | 41,097  | 2.88  | Other nervous system disorders                           | 11,348 | 0.8 |

Among the 574,599 SCN patients with at least one chronic condition, nearly half (48.6%) had a second (or co-morbid) chronic condition. This translates to an overall co-morbidity rate among all SCN patients of 19.5%. Figure B3 shows the number of SCN patients with multiple chronic health conditions.

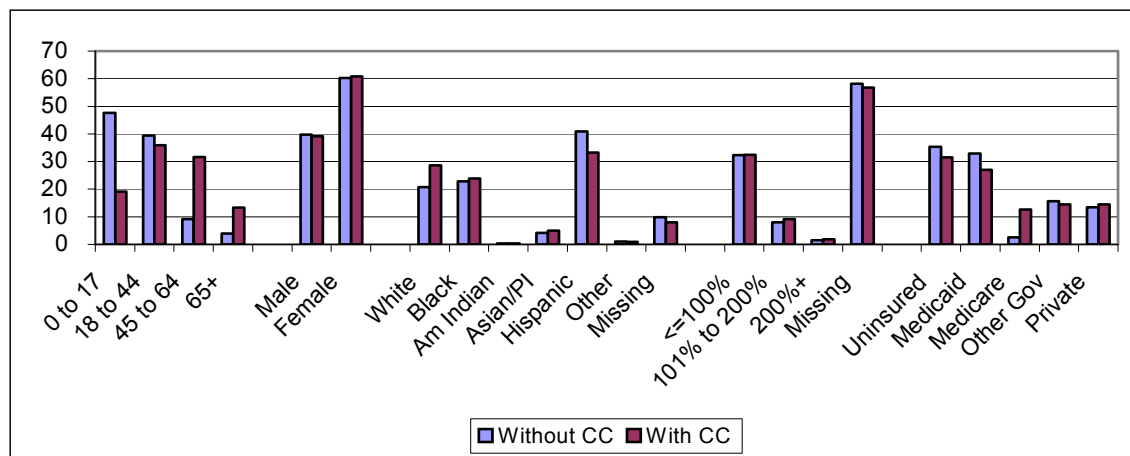
**Figure B3: Distribution of Chronic Health Conditions Among SCN Patients**

| Number of Chronic Conditions | Number of Patients with Chronic Condition | Percent of All SCN Patients |
|------------------------------|---|-----------------------------|
| 1 Condition                  | 295,424                                   | 20.7                        |
| 2 Conditions                 | 129,720                                   | 9.1                         |
| 3 Conditions                 | 70,659                                    | 4.9                         |
| 4 Conditions                 | 39,557                                    | 2.8                         |
| 5 Conditions                 | 20,653                                    | 1.4                         |
| 6 Conditions                 | 10,182                                    | 0.7                         |
| 7 Conditions                 | 4,711                                     | 0.3                         |
| 8 or More                    | 3,693                                     | 0.3                         |
| Total                        | 574,599                                   | 40.2                        |

Figure B4 shows the distribution of SCN patients with and without at least one chronic health condition within selected demographic categories. Of these categories, age showed the most consistent trend toward indicating whether or not patients had a chronic condition. While patients less than 18 years of age were about two and a half times more

likely to not have a chronic condition, patients in the 45 to 64 year and 65 year and older categories were about three times more likely to have a chronic condition. Additionally, White patients were more likely to have a chronic condition while Hispanic patients were more likely to have a non-chronic condition<sup>1</sup>.

**Figure B4: Distribution of Patients With & Without Chronic Health Conditions by Selected Demographic Characteristics**



Having a chronic health condition appeared to have a major impact on the number of encounters a patient had with a health center. While the overall average number of encounters for all SCN patients in 2004 was 3.9, the average number of encounters for patients with at least one chronic health condition was 5.6. This is more than twice the average number of encounters for patients without a chronic condition (2.7).

The average number of encounters also appeared to be related to the number of chronic health conditions diagnosed to a patient. Figure B5 illustrates a trend that shows an increase in the number of encounters as the number of chronic conditions found among patients increase.

<sup>1</sup> One potential reason for the lower chronic condition prevalence rate among Hispanics may be related to age. According to the SCN 2004 Aggregate Report, approximately 82% of the Hispanic patient population was less than 45 years of age, compared to 62% for Whites, 76% for Blacks, 74% for American Indians, 66% for Asians, and 74% for other race/ethnicity categories.

**Figure B5: Average Number of Encounters by the Number of Chronic Conditions**

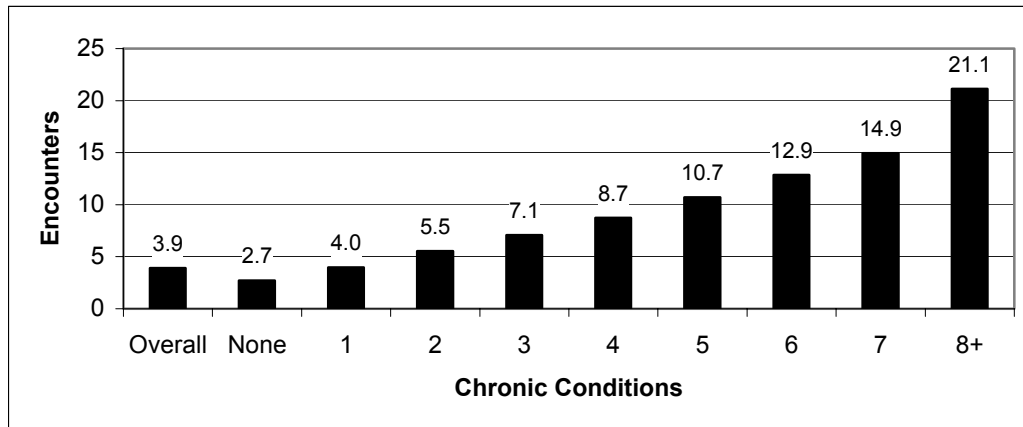
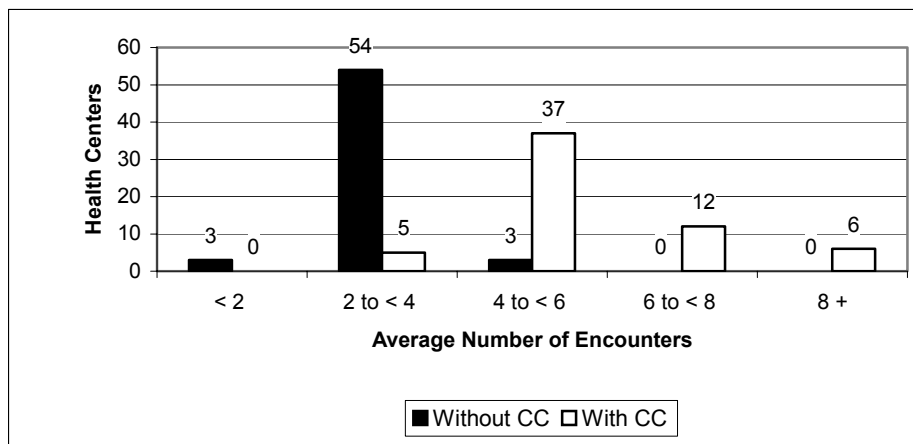


Figure B6 illustrates the difference between the average number of encounters for patients with and without chronic health conditions at the center level. Nearly all of the health centers (57 of 60), show an average number of encounters for patients without chronic health conditions of less than 4. Conversely, 55 of 60 health centers show an average number of encounters for patients with chronic health conditions of greater than 4.

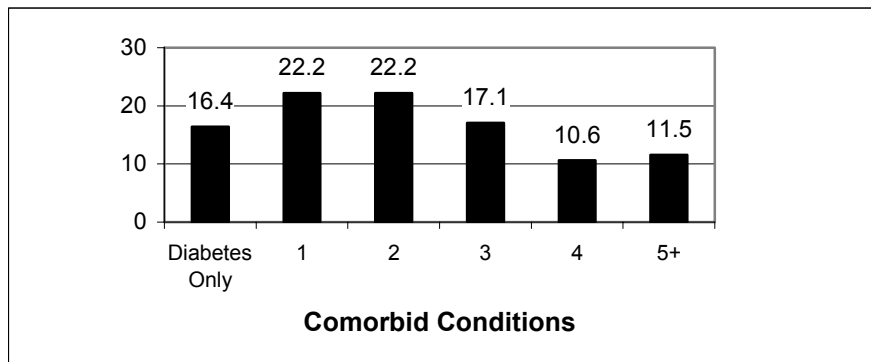
**Figure B6: Number of Health Centers by Average Number of Encounters Among Patients With & Without Chronic Conditions**



## Diabetes & Comorbid Conditions

Of the 1,428,651 patients identified within the SCN, 6.7% were diagnosed with diabetes (with and/or without complications) in 2004. This diabetes prevalence rate is 1.8 percentage points higher than the estimated diagnosed diabetes prevalence rate of 4.9% reported by the American Diabetes Association (ADA). Among the SCN diabetic population, 83.6% had a diagnosis of one or more additional chronic health conditions. Figure C1 shows the distribution of diabetic patients with the number of additional chronic health conditions. The most common chronic conditions associated with diabetic patients were hypertension (55.9%), Disorders of lipid metabolism (35.7%), and Other nutritional; endocrine and metabolic system (13.4%).

**Figure C1: Percentage of Diabetic Patients with Additional Chronic Conditions**



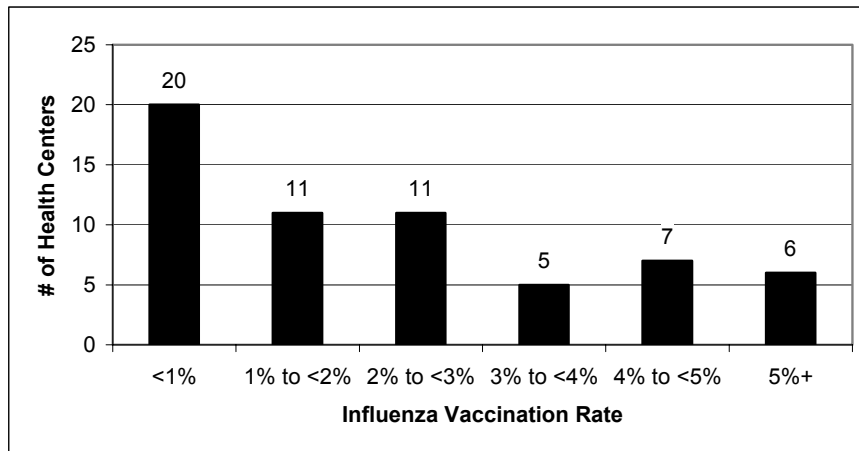
## Influenza & Pneumonia Vaccinations

Influenza and pneumonia are often associated with mortality especially among the elderly population. This section presents information about the number and percentage of patients who received an influenza or pneumonia vaccination within SCN health centers along with demographic characteristics that may influence these vaccination rates. Information is also presented that compares influenza and pneumonia vaccination rates by selected health conditions.

### Influenza Vaccinations

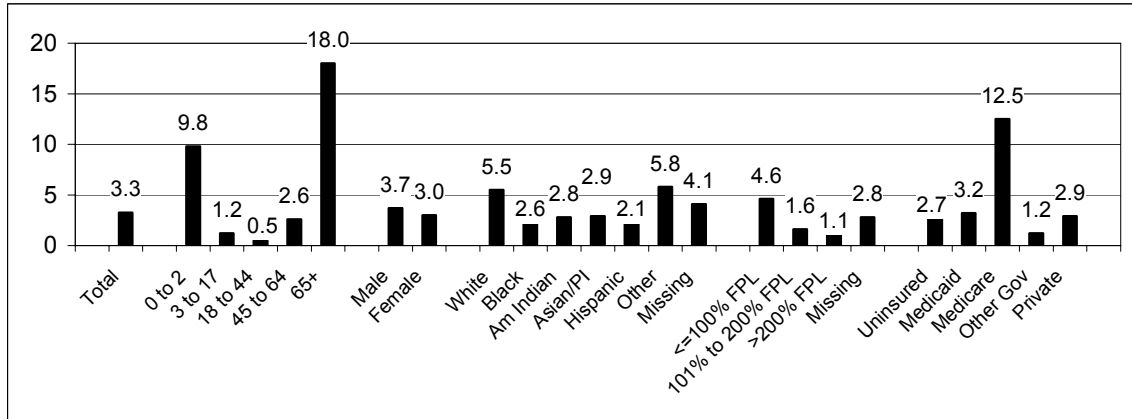
Among the 1,428,651 SCN patients in 2004, a total of 46,684 (3.3%) received an influenza vaccination at an SCN health center. The influenza vaccination rate varied by health center ranging from a high of 17.4% to a low of 0.0%, including 1 health center where no influenza vaccinations were provided. Figure D1 shows the number of health centers providing influenza vaccinations by influenza rate intervals. One-third of participating health centers provided influenza vaccinations to less than 1% of their patient populations.

**Figure D1: Number of Health Centers by Influenza Rates**



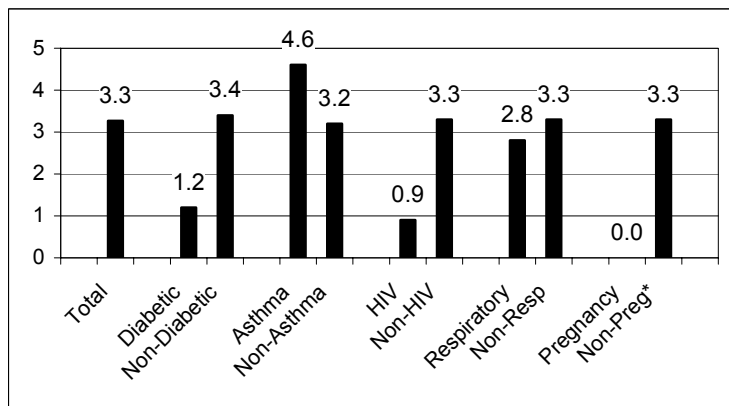
The influenza vaccination rate appeared to be very different by certain demographic characteristics (Figure D2). For example, children less than 2 years of age received an influenza vaccination about three times more often than the overall SCN patient population. Similarly, patients 65 years and older received an influenza vaccination more than five times more often than the overall patient population. A higher influenza vaccination rate among older patients was also reflected in the vaccination rate for patients with Medicare.

**Figure D2: Influenza Vaccination Rates by Demographic Characteristics**



Examination of influenza vaccination rates for patients with selected health conditions (diabetes, asthma, HIV, respiratory disease, and pregnancy) showed that, in 4 out of 5 health condition categories, having the health condition was associated with lower influenza vaccination rates than patients without the health condition (Figure D3). Only patients diagnosed with asthma had a higher influenza vaccination rate than patients without asthma.

**Figure D3: Influenza Vaccination Rates Among Patients with Selected Health Conditions**

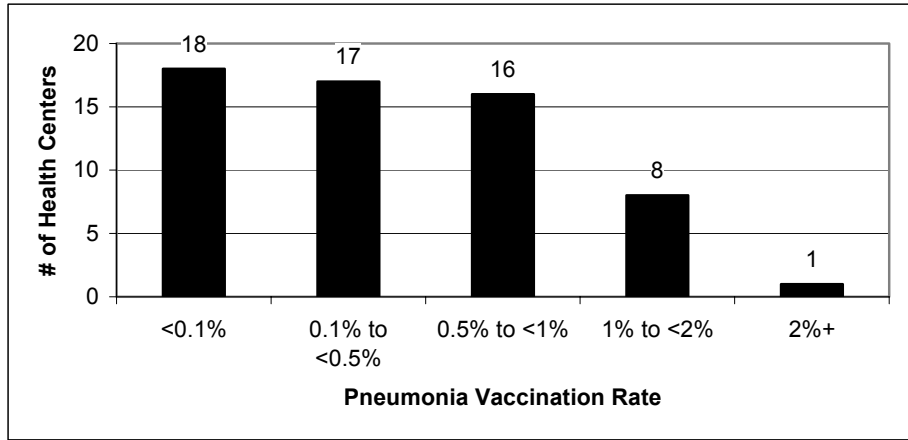


\*Includes all SCN patients who were identified as not being pregnant regardless of age or gender.

**Pneumonia Vaccinations**

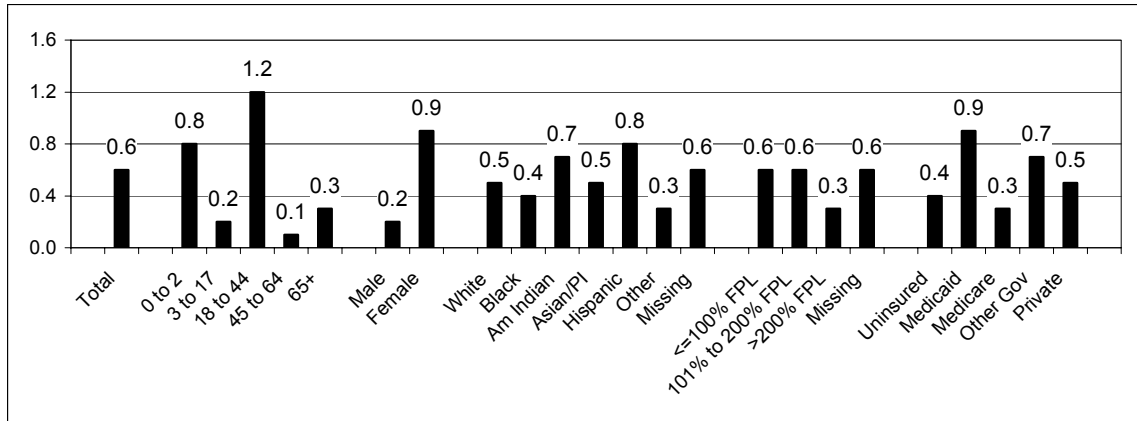
There were a total of 8,701 (0.6%) SCN patients who received a pneumonia vaccination by a participating health center in 2004. The pneumonia vaccination rate varied among participating health centers ranging from a high of 2.5% to a low of 0.0%. Of note, 6 health centers did not provide any pneumonia vaccinations to their patient populations. Figure D4 shows the overall number of health centers by pneumonia vaccination rate intervals. Fifty-one out of 60 health centers provided pneumonia vaccinations to less than 1% of their patient population.

**Figure D4: Number of Health Centers by Pneumonia Vaccination Rates**



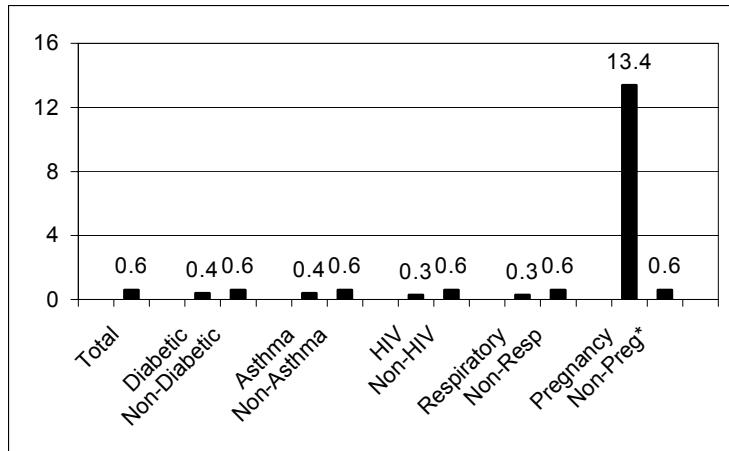
Pneumonia vaccination rates varied widely by demographic characteristics (Figure D5). Patients between the ages of 18 and 44 had the highest vaccination rate at 1.2%, followed by females and patients on Medicaid. Conversely, patients between the ages of 2 and 17 years, between 45 and 64 years, and males were among those patients with the lowest pneumonia vaccination rates at 0.2% or lower.

**Figure D5: Pneumonia Vaccination Rates by Demographic Characteristics**



The pneumonia vaccination rate was stratified by five selected health conditions (diabetes, asthma, HIV, respiratory disease, and pregnancy). In four of the five categories (diabetes, asthma, HIV, and respiratory disease), the pneumonia vaccination rates were lower for patients with the health condition than for patients without the conditions. However, among patients that were pregnant, the pneumonia vaccination rate reached its highest point at 13.4% compared to 0.6% for non-pregnant patients.

**Figure D6: Pneumonia Vaccination Rates by Selected Health Conditions**



\*Includes all SCN patients who were identified as not being pregnant regardless of age or gender.

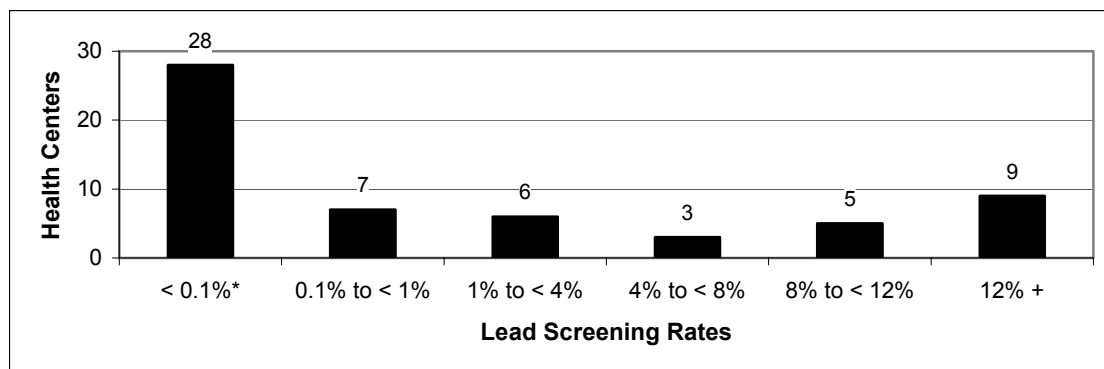
## Lead Screening & Diagnosis Among Children

Lead toxicity causes hematological, gastrointestinal and neurological dysfunctions. Excess lead absorption early in life results in decreased cognitive function that persists into late adolescence. Therefore, it is important that children at high risk of lead exposure be identified and screened at an early age. This section presents information about lead screenings and diagnoses of elevated blood lead levels or toxic effects of lead for children 9 to 72 months. The information is also reported separately for children 9 to 36 months and 37 to 72 months. Lead screenings were defined according to the procedure code CPT: 83655, while diagnosis of elevated blood lead levels and toxic exposure to lead were defined according to the ICD-9 codes: 984 and V15.86. Lead screening information from 58 of the 60 health centers contributing data to this report were included. The two centers not included did not provide care to children between the ages of 9 to 72 months.

### Children 9 to 72 Months

There were a total of 174,870 children 9 to 72 months identified within the SCN patient population in 2004. Among these children, 15,396 (8.80%) received a lead screening test. The lead screening rate varied widely by participating health centers ranging from a high of 58.2% to a low of 0.0%. In more than 40% of these health centers (25 of 58), no lead screening tests were found among any patient within this age range. Figure E1 shows the number of health centers by lead screening rates.

**Figure E1: Number of Health Centers by Lead Screening Rates**



\*Includes 25 health centers that did not provide lead screening test to any children 9 to 72 months

In addition to the number of children who received a lead screening test in 2004, Figure E2 also shows the number of children who were diagnosed with elevated blood lead levels or had a toxic exposure to lead, and the number of children who received a lead screening test and a diagnosis of elevated blood lead levels or a toxic exposure to lead at the same or later visit to the health center during 2004. For example, 571 children 9 to 72 months had a lead screening test and were subsequently diagnosed with elevated blood

lead levels or toxic exposure to lead, accounting for 3.7% of children screened and 0.33% of all children within this age range. Figure E2 also shows this information stratified by the children's payment source. Although children with Medicare had the lowest lead screening rate at 5.20% compared to other payment sources, these children had the highest diagnosis rate (2.49%) for elevated blood lead levels or toxic exposure to lead, nearly two times higher than the next highest rate found among children with Medicaid.

**Figure E2: Children 9 to 72 Months Who Were Screened & Diagnosed for Lead Exposure**

| Payment Source | Screened for Elevated Blood Lead Levels |                         | Diagnosed with Elevated Blood Lead Levels* |                         | Screened & Diagnosed with Elevated Blood Lead Levels |                              |                         | Total Children (9 to 72 Months) |
|----------------|---|-------------------------|--|-------------------------|--|------------------------------|-------------------------|---------------------------------|
|                | Number of Children (9 to 72 months)     | Percent of All Children | Number of Children (9 to 72 months)        | Percent of All Children | Number of Children (9 to 72 months)                  | Percent of Children Screened | Percent of All Children |                                 |
| Total          | 15,396                                  | 8.80                    | 1,955                                      | 1.12                    | 571  | 3.71                         | 0.33                    | 174,870                         |
| Uninsured      | 2,989                                   | 10.83                   | 197  | 0.71                    | 100  | 3.35                         | 0.36                    | 27,589                          |
| Medicaid       | 9,887                                   | 9.34                    | 1,125                                      | 1.06                    | 335  | 3.39                         | 0.32                    | 105,804                         |
| Medicare       | 1,032                                   | 5.20                    | 494  | 2.49                    | 72   | 6.98                         | 0.36                    | 19,852                          |
| Othe Gov.      | 848                                     | 5.21                    | 105  | 0.65                    | 44   | 5.19                         | 0.27                    | 16,264                          |
| Private        | 640                                     | 11.94                   | 34   | 0.63                    | 20   | 3.13                         | 0.37                    | 5,361                           |

\*Includes all children who were identified with elevated blood lead levels or toxic effects of lead regardless of whether or not they were identified as having been screened.

**Children 9 to 36 Months & 37 to 72 Months**

Figures E3 and E4 present similar information as Figure E2 but with more specific age ranges. For example, Figure E3 includes only children ages 9 to 36 months, while Figure E4 includes children 36 to 72 months. Similar patterns can be seen across these two figures, with two exceptions: the screening rate is considerably higher among the younger children (11.86% compared to 6.15% among the older children), but the percentage of children who were screened and diagnosed with elevated blood lead levels is higher among the older children (4.38% vs. 3.3% for the younger children).

**Figure E3: Children 9 to 36 Months Who Were Screened & Diagnosed for Lead Exposure**

| Payment Source | Screened for Elevated Blood Lead Levels |                         | Diagnosed with Elevated Blood Lead Levels* |                         | Screened & Diagnosed with Elevated Blood Lead Levels |                              |                         | Total Children (9 to 36 Months) |
|----------------|---|-------------------------|--|-------------------------|--|------------------------------|-------------------------|---------------------------------|
|                | Number of Children (9 to 36 months)     | Percent of All Children | Number of Children (9 to 36 months)        | Percent of All Children | Number of Children (9 to 36 months)                  | Percent of Children Screened | Percent of All Children |                                 |
| Total          | 9,637                                   | 11.86                   | 838  | 1.03                    | 319  | 3.31                         | 0.39                    | 81,240                          |
| Uninsured      | 1,435                                   | 11.94                   | 79   | 0.66                    | 44   | 3.07                         | 0.37                    | 12,015                          |
| Medicaid       | 6,977                                   | 13.47                   | 495  | 0.96                    | 194  | 2.78                         | 0.37                    | 51,788                          |
| Medicare       | 547                                     | 6.38                    | 196  | 2.29                    | 47   | 8.59                         | 0.55                    | 8,571                           |
| Othe Gov.      | 433                                     | 6.47                    | 56   | 0.84                    | 26   | 6.00                         | 0.39                    | 6,695                           |
| Private        | 245                                     | 0.30                    | 12   | 0.55                    | 8  | 3.27                         | 0.37                    | 2,171                           |

\*Includes all children who were identified with elevated blood lead levels or toxic effects of lead regardless of whether or not they were identified as having been screened.

**Figure E4: Children 37 to 72 Months Who Were Screened & Diagnosed for Lead Exposure**

| Payment Source | Screened for Elevated Blood Lead Levels |                         | Diagnosed with Elevated Blood Lead Levels* |                         | Screened & Diagnosed with Elevated Blood Lead Levels |                              |                         | Total Children (37 to 72 Months) |
|----------------|---|-------------------------|--|-------------------------|--|------------------------------|-------------------------|----------------------------------|
|                | Number of Children (37 to 72 months)    | Percent of All Children | Number of Children (37 to 72 months)       | Percent of All Children | Number of Children (37 to 72 months)                 | Percent of Children Screened | Percent of All Children |                                  |
| Total          | 5,759                                   | 6.15                    | 1,117                                      | 1.19                    | 252  | 4.38                         | 0.27                    | 93,630                           |
| Uninsured      | 1,554                                   | 9.98                    | 118  | 0.76                    | 56   | 3.60                         | 0.36                    | 15,574                           |
| Medicaid       | 2,910                                   | 5.39                    | 630  | 1.17                    | 141  | 4.85                         | 0.26                    | 54,016                           |
| Medicare       | 485                                     | 4.30                    | 298  | 2.64                    | 25   | 5.15                         | 0.22                    | 11,281                           |
| Othe Gov.      | 415                                     | 4.34                    | 49   | 0.51                    | 18   | 4.34                         | 0.19                    | 9,569                            |
| Private        | 395                                     | 12.38                   | 22   | 0.69                    | 12   | 3.04                         | 0.38                    | 3,190                            |

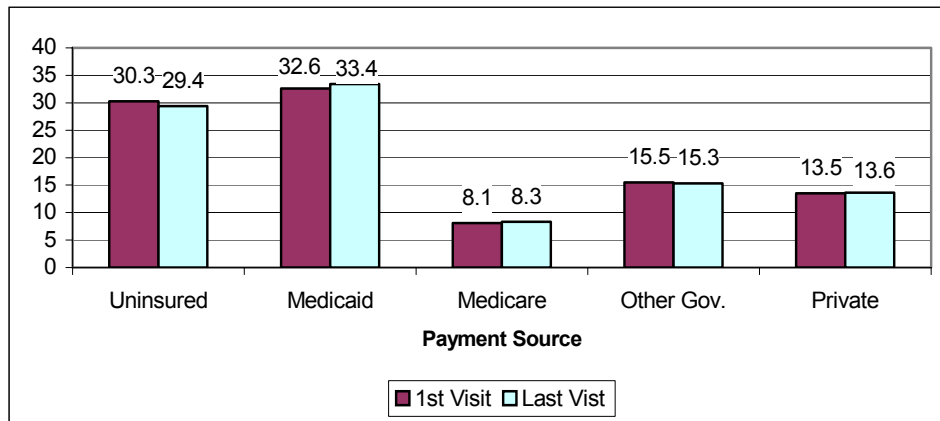
\*Includes all children who were identified with elevated blood lead levels or toxic effects of lead regardless of whether or not they were identified as having been screened.

## Changing Payment Sources Among SCN Patients

In order to determine the stability of payment sources among SCN patients, this section presents information about the payment source identified at a patient's first visit in 2004 and compares it with the payment source at a patient's last visit within the same year. Information is also presented that shows which payment source categories patients move to, and from, between these visits. Only patients who had more than one visit in 2004 and had non-missing payment source information at their first and last visits were included in this analysis.

A total of 824,286 patients were identified as having more than one visit in 2004 and had non-missing payment source information at these visits. As shown in Figure F1, there were minimal differences between the percentage of patients with a particular payment source at the first and last visit. All payment source categories varied by less than one percentage point.

**Figure F1: Comparison of Payment Source at Patient's First & Last Visits**



Although differences between first and last visit within each payment source category were relatively minor for the overall patient population, further investigation was conducted to determine the extent to which payment source changes occurred for individual patients. Figure F2 shows that in many instances, a small percentage of patients that had a particular payment source at their first visit had a different payment source by their last visit. However, roughly the same percentage of patients that flowed out of a particular payment source category also flowed back into it. For example, of the 824,286 patients within this analysis, 30.3% were uninsured at their first visit. Of these uninsured patients, 83.8% were also uninsured at their last visit, while 16.2% of these patients moved to a different payment source category: 9.1% moved to Medicaid, 1.0% moved to Medicare, 3.1% moved to other government, and 2.9% moved to private insurance. On the other hand, of the 29.4% of patients that were uninsured at their last visit, 83.8% also were uninsured at their first visit, but 5.9% moved from Medicaid, 4.2%

moved from Medicare, 5.6% moved from other government, and 6.5% moved from private insurance.

**Figure F2: Flow of Payment Source Among SCN patients**

| Payment Source<br>at First Visit | Payment Source at Last Visit |                   |                   |                 |                   |                   |
|----------------------------------|------------------------------|-------------------|-------------------|-----------------|-------------------|-------------------|
|                                  | Total                        | Uninsured         | Medicaid          | Medicare        | Other Gov.        | Private           |
| Total                            | 824286 (100%)                | 242181<br>(29.4%) | 275411<br>(33.4%) | 68621<br>(8.3%) | 126322<br>(15.3%) | 111751<br>(13.6%) |
| Uninsured                        | 249431 (30.3%)               | <b>83.8%</b>      | 9.1%              | 1.0%            | 3.1%              | 2.9%              |
| Medicaid                         | 268952 (32.6%)               | 5.9%              | <b>90.0%</b>      | 1.2%            | 1.9%              | 1.0%              |
| Medicare                         | 66649 (8.1%)                 | 4.2%              | 2.9%              | <b>91.8%</b>    | 0.3%              | 0.8%              |
| Other Gov.                       | 127915 (15.5%)               | 5.6%              | 5.1%              | 0.4%            | <b>88.2%</b>      | 0.7%              |
| Private                          | 111339 (13.5%)               | 6.5%              | 2.1%              | 1.0%            | 0.4%              | <b>90.0%</b>      |

## Conclusion

The SCN is a rich and diverse source of data on patients of health centers. The SCN collects data on patient demographics, diagnoses, services, diagnostic tests, providers, and clinical information from a wide range of health centers located throughout the United States. The analyses presented in this report, along with the 2004 Aggregate Report, are baseline examples of the type of information available within the SCN data set. Many of the analyses in this report will be repeated with 2005 data and incorporated into the 2005 Aggregate Report. The 2005 Supplemental Report will then include a variety of more in-depth exploratory analyses. It is the intent of the SCN to focus more of its future analyses on quality of care for patients of health centers.

The SCN encourages communication from its members as well as other interested parties. To comment or inquire about any of the information presented in this report, please contact the SCN staff at MPHI at [scn@mphi.org](mailto:scn@mphi.org). To inquire about any aspects of the SCN project, please contact Amisha Pandya ([APandya@hrsa.gov](mailto:APandya@hrsa.gov)) or Vanessa Watters ([VWatters@hrsa.gov](mailto:VWatters@hrsa.gov)) at HRSA.

## Appendix I – Chronic Conditions Among SCN Patients

**Figure I1: Complete Listing of Chronic Conditions Among SCN Patients**

| Chronic Condition                        | #       | %     | Chronic Condition                          | #     | %    |
|--|---------|-------|--|-------|------|
| Hypertension                             | 173,034 | 12.11 | Genitourinary congenital anomalies         | 1,726 | 0.12 |
| Disorders of lipid metabolism            | 98,252  | 6.88  | Mental retardation                         | 1,635 | 0.11 |
| Diabetes mellitus without complication   | 80,049  | 5.60  | Cardiac and circulatory congenital anomaly | 1,604 | 0.11 |
| Other mental conditions                  | 60,738  | 4.25  | Acquired deformities                       | 1,530 | 0.11 |
| Asthma                                   | 59,892  | 4.19  | Paralysis                                  | 1,430 | 0.10 |
| Other upper respiratory disease          | 59,607  | 4.17  | Systemic lupus erythematosus and connect   | 1,428 | 0.10 |
| Other nutritional; endocrine; and metabo | 59,429  | 4.16  | Diseases of white blood cells              | 1,410 | 0.10 |
| Diseases of female genital organs        | 49,971  | 3.50  | Cancer of breast                           | 1,323 | 0.09 |
| Non-traumatic joint disorders            | 42,627  | 2.98  | Cancer of male genital organs              | 1,173 | 0.08 |
| Anxiety; somatoform; dissociative; and p | 41,097  | 2.88  | Cancer; other primary                      | 958   | 0.07 |
| Diabetes mellitus with complications     | 35,034  | 2.45  | Personal history of mental disorder; scr   | 884   | 0.06 |
| Alcohol and substance-related mental dis | 34,961  | 2.45  | Other lower respiratory disease            | 828   | 0.06 |
| Upper gastrointestinal disorders         | 34,001  | 2.38  | Cancer of lymphatic and hematopoietic ti   | 809   | 0.06 |
| Diseases of the heart                    | 32,774  | 2.29  | Joint disorders and dislocations; trauma   | 745   | 0.05 |
| Thyroid disorders                        | 30,717  | 2.15  | Colorectal cancer                          | 733   | 0.05 |
| Affective disorders                      | 26,862  | 1.88  | Lung disease due to external agents        | 518   | 0.04 |
| Chronic obstructive pulmonary disease an | 17,342  | 1.21  | Infective arthritis and osteomyelitis (e   | 516   | 0.04 |
| Symptoms; signs; and ill-defined conditi | 15,123  | 1.06  | Cancer of bronchus; lung                   | 498   | 0.03 |
| Viral infection                          | 13,333  | 0.93  | Other connective tissue disease            | 478   | 0.03 |
| Other nervous system disorders           | 11,348  | 0.79  | Other infections; including parasitic      | 455   | 0.03 |
| Preadult disorders                       | 10,881  | 0.76  | Nervous system congenital anomalies        | 453   | 0.03 |
| Headache; including migraine             | 10,716  | 0.75  | Nutritional deficiencies                   | 437   | 0.03 |
| Diseases of male genital organs          | 10,615  | 0.74  | Digestive congenital anomalies             | 426   | 0.03 |

| Chronic Condition                        | #     | %    | Chronic Condition                        | #   | %    |
|--|-------|------|--|-----|------|
| Diseases of the urinary system           | 9,859 | 0.69 | Other gastrointestinal cancer            | 399 | 0.03 |
| Eye disorders                            | 9,780 | 0.68 | Diseases of veins and lymphatics         | 354 | 0.02 |
| Respiratory infections                   | 8,237 | 0.58 | Cancer of uterus and cervix              | 302 | 0.02 |
| Osteoporosis                             | 6,768 | 0.47 | Secondary malignancies                   | 283 | 0.02 |
| Cerebrovascular disease                  | 6,543 | 0.46 | Cancer of urinary organs                 | 277 | 0.02 |
| Diseases of arteries; arterioles; and ca | 5,567 | 0.39 | Neoplasms of unspecified nature or uncer | 236 | 0.02 |
| Spondylosis; intervertebral disc disorde | 5,554 | 0.39 | Complications                            | 235 | 0.02 |
| Schizophrenia and related disorders      | 5,516 | 0.39 | Cancer of ovary and other female genital | 208 | 0.01 |
| Other endocrine disorders                | 5,102 | 0.36 | Immunity disorders                       | 203 | 0.01 |
| Other congenital anomalies               | 4,962 | 0.35 | Cancer of skin                           | 189 | 0.01 |
| Gout and other crystal arthropathies     | 4,814 | 0.34 | Pancreatic disorders (not diabetes)      | 173 | 0.01 |
| Other inflammatory condition of skin     | 4,689 | 0.33 | Biliary tract disease                    | 168 | 0.01 |
| Ear conditions                           | 4,424 | 0.31 | Other skin disorders                     | 159 | 0.01 |
| Senility and organic mental disorders    | 4,219 | 0.30 | Malignant neoplasm without specification | 142 | 0.01 |
| Other gastrointestinal disorders         | 3,776 | 0.26 | Cystic fibrosis                          | 141 | 0.01 |
| Anemia                                   | 3,427 | 0.24 | Maintenance chemotherapy; radiotherapy   | 115 | 0.01 |
| Hereditary and degenerative nervous syst | 3,216 | 0.23 | Bacterial infection                      | 108 | 0.01 |
| Liver disease                            | 2,981 | 0.21 | Open wounds                              | 105 | 0.01 |
| Chronic ulcer of skin                    | 2,778 | 0.19 | Other hematologic conditions             | 94  | 0.01 |
| Epilepsy; convulsions                    | 2,649 | 0.19 | Gastrointestinal hemorrhage              | 82  | 0.01 |
| Lower gastrointestinal disorders         | 2,527 | 0.18 | Spinal cord injury                       | 81  | 0.01 |
|  | 2,498 | 0.17 | Benign neoplasms                         | 67  | 0.00 |
| Coagulation and hemorrhagic disorders    | 2,421 | 0.17 | Coma; stupor; and brain damage           | 63  | 0.00 |
| Other psychoses                          | 2,168 | 0.15 | Central nervous system infection         | 54  | 0.00 |
| Other bone disease and musculoskeletal d | 1,918 | 0.13 | Other perinatal conditions               | 49  | 0.00 |
| Poisoning                                | 1,814 | 0.13 | Respiratory failure; insufficiency; arre | 40  | 0.00 |
| Complications mainly related to pregnanc | 1,759 | 0.12 | Factors influencing health care          | 18  | 0.00 |